



# Park Lawn

Helping people with disabilities thrive





# Where Possibilities are Limitless



## Dignity and pride delivered daily.

Everyone deserves an opportunity to **contribute, connect and be valued**. Since 1955, Park Lawn has been helping people with cognitive and developmental disabilities thrive.

Today, as a nationally accredited, not-for-profit organization, Park Lawn stands stronger than ever. We have branched out into the community with beautifully renovated facilities that are uniquely suited to the diverse needs and positive energy of our participants. Every day, we open our doors to limitless possibilities... and we invite you to join us.

## Innovative programs that forge life-long connections.

At Park Lawn, we help adults with disabilities **discover their passion** and **take pride in their accomplishments** by providing a space to be themselves. A home to call their own. A place to connect and forge lasting friendships. To help **realize their greatest potential**, we offer a comprehensive range of services and residences — all expertly matched to their interests, comfort and capabilities.



# Community Day Services

It's vital for everyone to be part of a larger social fabric. Community Day Services offers different levels of involvement — from fast-paced, dynamic programs for those transitioning from the school system to slower paced programs for participants who are older or may have less stamina.

## CHOICE

LOCATIONS: **Crestwood and Chicago Ridge**

This program promotes responsibility, independence and self-advocacy by empowering participants to explore and discover new interests. At the heart of it all is our forward-thinking curriculum that provides the training and skills needed to pursue social, employment and volunteer opportunities within the community. Participants create their own schedule of activities choosing from an ever-changing lineup of options that match their interests.

## Discover

LOCATIONS: **Tinley Park and Palos Heights**

Discover offers opportunities to explore interests, increase self-awareness and interact with the community. This program encompasses in-house activities, skill building and peer interaction to help participants choose community and volunteer activities that spark their interests and imagination.

# Connections

LOCATION: **Oak Lawn**

This unique program serves people with severe intellectual disabilities who are medically fragile. The goal of Connections is to make each day better by providing a welcoming and safe environment at Park Lawn where participants engage in a variety of discovery and individualized services to enhance communication, independence and community exploration.

## Grace

LOCATION: **Palos Heights**

Park Lawn is especially dedicated to advocating and supporting adults with disabilities throughout every phase of life. Through our Grace program, we cater to an older population who may be experiencing physical and cognitive changes as they age. Designed to meet their unique and evolving needs, Grace provides active programs and choices that help enhance quality of life.

# Residential Services

People feel more empowered when they have a home to call their own. Each of our residential settings is attuned to residents' individual needs and capabilities, while providing a comfortable space where ideas and input are valued, and community participation opportunities abound.

## Community Integrated Living Arrangements (CILA)

With numerous locations across Chicago's south side, each of our CILA homes houses five to six residents and provides the greatest opportunity for independent living. With staff guidance, residents make household decisions and are highly involved in meal planning and preparation, home upkeep and developing a schedule that matches individual interests.

## Park Lawn Home

LOCATION: **Alsip**

This smaller, Intermediate Care Facility houses 15 residents who share in decision making and household tasks including meals, laundry and creating a recreational calendar. Residents receive a high level of support to advance personal skills and work towards the goal of further independence.

# Park Lawn Center

LOCATION: **Alsip**

An Intermediate Care Facility, Park Lawn Center is home to 40 residents with severe cognitive and complex physical disabilities. This home offers 24-hour residential care and basic nursing services to those who need help with daily living skills. Residents enjoy participating in the planning of social and community activities.

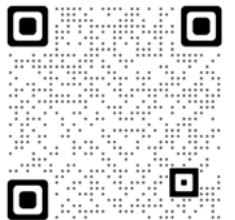
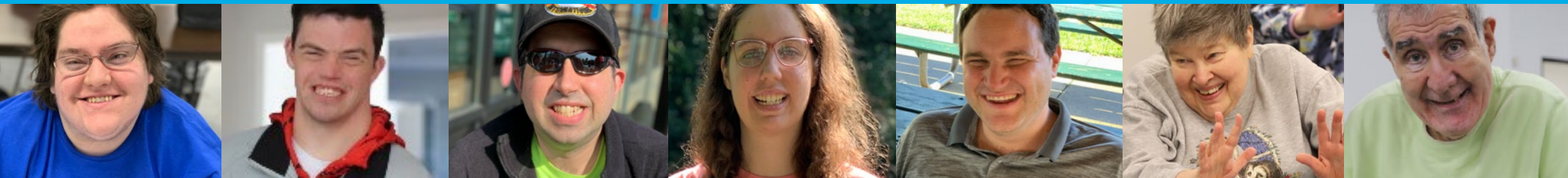
## Home-Based Services

This Medicaid Waiver program provides federal and state funds, on a monthly basis, to individuals with intellectual disabilities to purchase needed supports and services. **Park Lawn is proud to work with hundreds of families each year**, offering ongoing guidance and assistance while cultivating long-lasting partnerships.

Our friendly, Self-Direction Assistants are a crucial resource that can **help you navigate this complex system** while maximizing the impact of your funding and empowering you to better advocate for a family member. Together, we'll help you identify the support and community services needed — from modifying your home and purchasing equipment to finding therapists and counselors, day programs and so much more.



#WeAreParkLawn



Scan to learn more.

# Supported Employment

Employment is transformative to the lives of our participants, instilling an enormous sense of pride and accomplishment. Through carefully cultivated relationships with local businesses, we offer a variety of employment opportunities.

To assure success, program participants are each matched with a job coach who provides the guidance and skills needed to put together a resume, prepare for an interview and train for a particular job. The job coach also acts as a liaison between employers and program participants to foster a healthy working relationship.

## Everyone has a gift. We'll help find yours.

We invite you to discover the limitless possibilities for a loved one or yourself.

Beyond our expansive programming, we also offer numerous **career, volunteer and donation opportunities** to help enrich the lives of our participants...and your own life as well. We take tremendous pride in the work we do and hope you will consider supporting or joining our organization.

---

To become part of our Park Lawn family, reach out to us at [info@parklawn.com](mailto:info@parklawn.com) or visit [www.parklawn.com](http://www.parklawn.com).

---

 **Park Lawn**

Helping people with disabilities thrive